

COST EFFECTIVE AUTOMATIC ROBOTIC SOLDERING



lavor**tec**

AUTOMATIC ROBOTIC SOLDERING

H351 + H501

Automation of your hand soldering tasks by cost effective robotic soldering. Flexible usage with a powerful soldering device for a wide range of application. Easy to program; everything programmable in one control system.



H351

H351 Can handle PCBs up to 350x350mm

Solder system: Constant contact-force of the solder-tip in horizontal and vertical direction.

Solder Iron: 400W high power strong heat recovery heater Ensure the soldering quality.



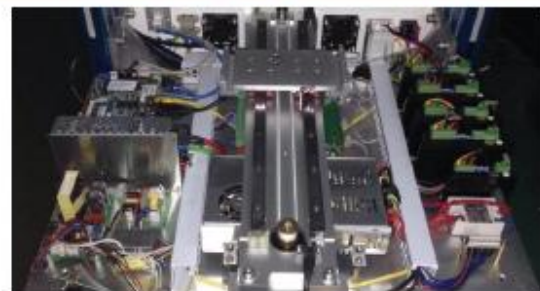
The mobile smoke cover extracts smokes wherever you solder to keep air clean in workshop.(Optional)



Automatic Soldering Robot H351 & H501DS Series Descriptions:

- ▶ Window 7 English operation system.
- ▶ 12" full touch screen and wireless controller .
- ▶ Self-developed software ,fool-style programming.
- ▶ Temperature range: ambient temperature to 500 °C.
- ▶ 400W high power strong heat recovery heater.
- ▶ Automatic cleaning of soldering iron.
- ▶ Temperature Monitoring.
- ▶ Automatic solder feeder.
- ▶ Repeatability <0.02mm.

H501DS Can handle PCBs up to 500x350mm(2 PCBs Capable)



H351: 5 axis combined controller for X,Y,Z, R, and soldering wire feeding motion system.

H501DS: 6 axis combined controller for X,Y, Z,R, and soldering wire feeding motion system.(Double-station)

H501DS: Soldering and replacing PCB can be executed simultaneously by 2 work station soldering robot, soldering iron never stop, it greatly improve production efficiency.

Advanced design, beautiful shape, solid structure break traditional framework, which is more reasonable and practical.

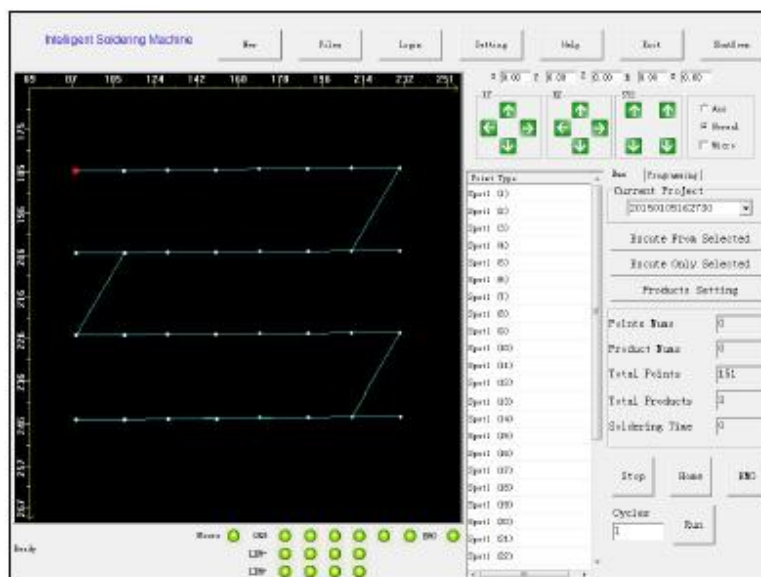
The repeated accuracy of 24-hour "NRZ" continuous motion <0.02mm.

Two models for single board or double board handling and a wide range of quality accessories allow configuring the equipment according to your needs and applications.



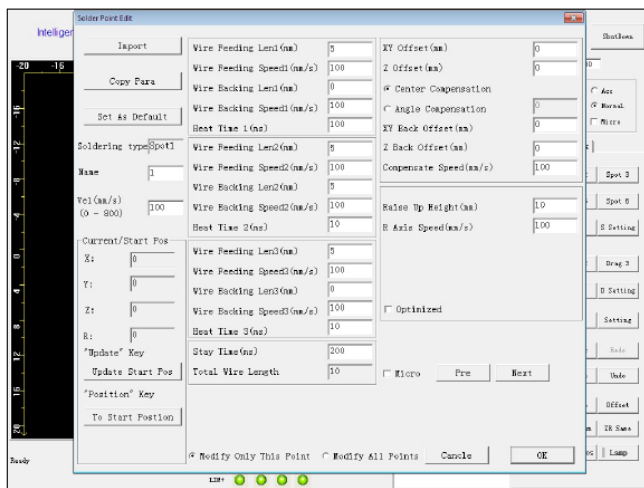
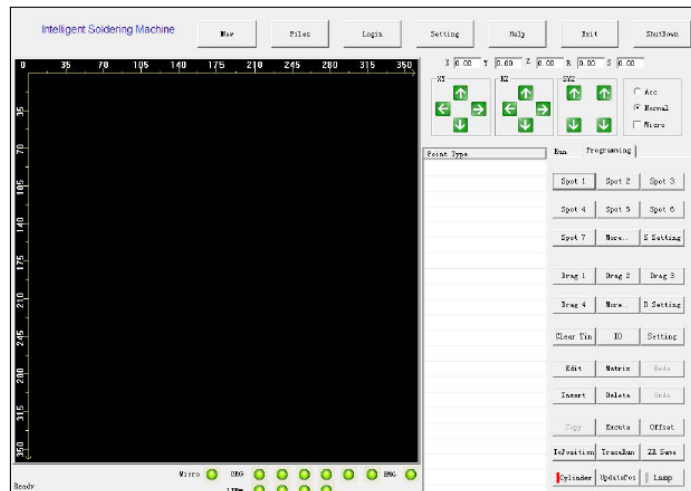
Excellent quickstep solder tip position system

- The self-developed software & hardware researched enjoy free upgrade in the whole service life.
- Full touch operation + fool-style programming, in which case any setting can be realized by click.
- The display screen of coordinatometer shows the track of all soldering spots clearly and makes program modification more visually.
- When there is no obstacle between two adjacent soldering items, the optimizing process is available, and the machine will choose the shortest operating path to improve work efficiency.



Operation

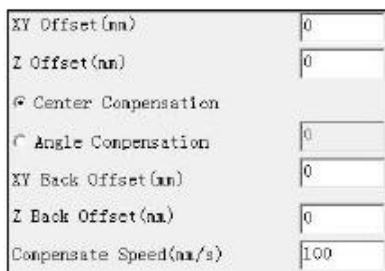
Easier setting operation for spot soldering and drag soldering; built-in data can be called out at any moment; digitized setting for soldering spots of different sizes are more visually.



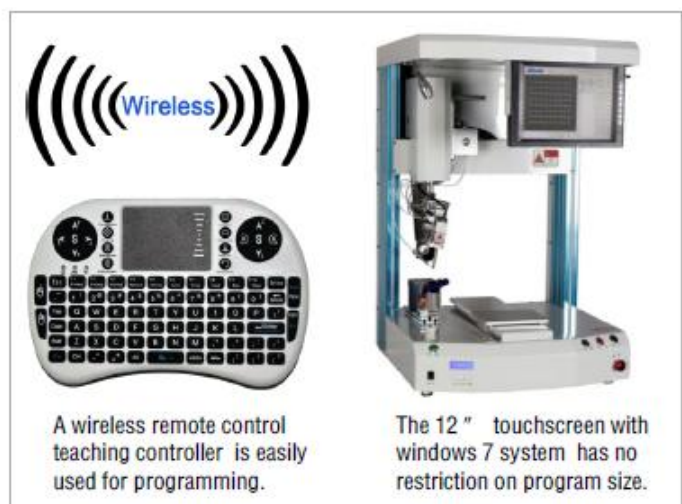
Program edit

Bulk modification of similar soldering spots can be set without modifying one by one. Insert or delete soldering spot coordinates in any position without affecting other soldering spots.

The wireless remote control allows an easy programming and teaching. A generous 12" monitor and a internal memory capacity of 16G offers nearly endless program capacity and makes the machine ideal for highly flexible production environments where a lot of product changes take place.



The machine will calculate compensation spots automatically if the compensation data have been setup, and there is no need for manual spot selection.



A wireless remote control teaching controller is easily used for programming.

The 12" touchscreen with windows 7 system has no restriction on program size.

Specifications and Comparison list

MODEL	H501DT	H351
Axes	6-axis (X/Y1/Y2/Z/R/wire feeder)	5-axis(X/Y/Z/R/wire feeder)
Equipment travel	500*350*100mm*360°	350*350*100mm*360°
Running speed (X/Y/Z/R)	X/Y1/Y2/Z:800mm/s R:180°/s	X/Y/Z:800mm/s R:180°/s
Repeat positioning accuracy	±0.02mm	±0.02mm
Load	10KG	10KG
Program recording capability	Unlimited	Unlimited
Display mode	12 "LCD screen	12 "LCD screen
System platform	Windows 7 OS professional	Windows 7 OS professional
Operation	Touch Screen + Wireless Remote	Touch Screen + Wireless Remote
Motion system	Stepper motor	Stepper motor
Temperature Range	100℃~500℃	100℃~500℃
Solder wire feeding system	Independent drive and Stepper motor	Independent drive and Stepper motor
Min solder wire feeding length	0.01mm	0.01mm
Solder wire diameter range	0.3–1.6 mm	0.3–1.6 mm
Power supply	220V AC/50HZ	220V AC/50HZ
Air pressure	0.4–5kg/cm ²	0.4–5kg/cm ²
Work environment	0–40℃	0–40℃
Machine Size(mm)	L700*W620*H970 mm	L600*W565*H900
Weight	85KG	65KG

Technical data subject to change

www.lavortec.com

Lavortec GmbH • Lindenhofstrasse 11
8624 Grüt • Switzerland
Phone: +41 (0)41 752 00 32
Email: info@lavortec.com