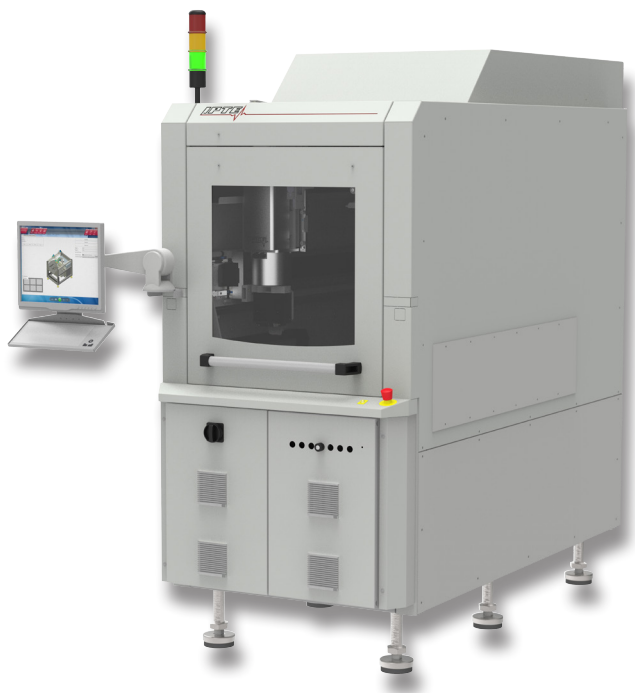
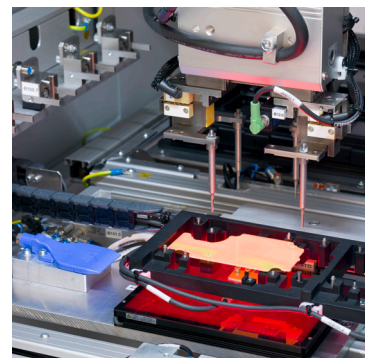
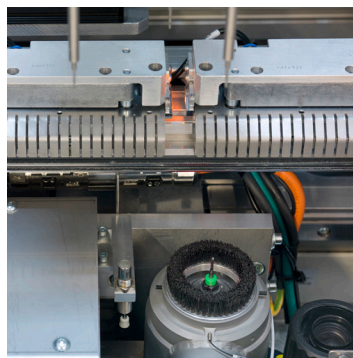


FlexRouter II

Flexible depaneling system



- High speed, low stress separating process
- Ideal for high diversity, high volume production
- High speed linear motor technology
- Flexible servo and pneumatic grippers
- Bottom side routing, top side gripper
- Small footprint
- Individual outfeed handling of the separated boards
- Fiducial recognition
- TS1 HMI



FlexRouter II

Flexible depaneling system

PCB Specification	
Working area (L x W):	400 x 330 mm (without vision) 330 x 330 mm (with vision)
PCB Width:	330 mm
PCB Length:	400 mm
PCB Ratio:	0,8 (length \geq 0,8 x width)
PCB Thickness:	0,8 - 4 mm
Component height (top side):	40 mm
Component height (bottom side):	8 mm
PCB Edge support:	2,0 - 4,5 mm adjustable
PCB Weight:	2,5 kg
Process Specification	
X-Y Actuation:	Linear motor for linear and non-linear movements
Z Actuation:	Servo
Gripper Actuation:	Servo, 0-360°
Separating Accuracy:	\pm 0,1 mm
Cutting Speed (Routing):	up to 80 mm/sec
Router bit exchange:	Automatic
Router bit diameters:	0,8 - 3,1 mm
Dust exhaustion:	Bottom side with external industrial vacuum cleaner
Technical Specification	
Infeed Conveyor:	Edge Belt Conveyor (Manual width adjustment)
Transport height:	940 - 965 mm, SMEA
Transport direction:	L \rightarrow R, R \rightarrow L (to be specified at time of order)
Protection screens:	ESD-safe working area, ionized air supply to working area
Energy requirements:	3 x 208/400 V AC, 50/60 Hz, 5 kVA
Compressed air:	6 bar, min 100 NL/min, according to DIN ISO 8573 3.4.5
Color:	RAL 7035 ESD Safe
Dimensions (L x D x H):	1.000 x 1.900 x 2.200 mm
Weight:	ca 1.600 kg
Interface:	TS1
Standards:	CE
Options	
Router bit diameter check	
Router bit length check	
Fail PCB separation	
Automatic width adjustment for edge belts	
Automatic tool exchange system with magazine up to 8 router bits	
Vision system for teaching	
1D/2D Code Reader	
Routing program generator based on .DXF or gerber data	
Traceability software (CamX)	
Gripper Finger magazine	

■ IPTE
Geleenlaan 5
3600 Genk
Belgium
Tel: +32 (0)89 623 000
Fax: +32 (0)89 623 010
Email: info@ipte.com

■ IPTE Sales
Detailed information on our
worldwide sales offices can
be found on our website at
www.ipte.com

WWW.IPTE.COM