

PWB Visual Inspection Machine

SI-V200

High speed high precision inspection machine

Equipped with excellent optical devices such as 5 mega pixel color CCD camera and 3 stage white ring light

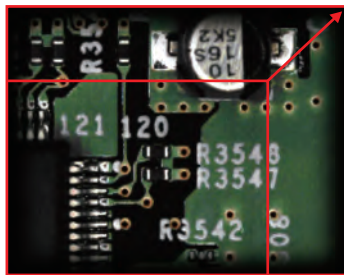
A variety of network systems to increase inspection efficiency and productivity is available



PWB Visual Inspection Machine SI-V200

5 megapixel full color CCD camera

A 5 megapixel color CCD camera ensures wider screen view. It provides high speed and high accuracy at the same time.



<Full color CCD>

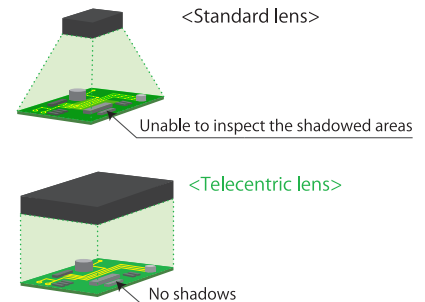
3 stage white ring light

High-intensity white LED light clearly reflects the component color. The 3 stage white ring light with different lighting angles makes it possible to capture sharp inspection images without shadow or over exposure.



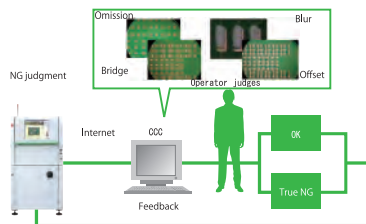
Telecentric lens

With a telecentric lens, the system is able to capture images as viewed from directly above, from corner to corner, including defects that may be hiding in the shadow of a taller part.



CCC (Central Confirmation Control*)

NG images obtained by multiple inspection machines are gathered into a central PC enabling a single operator to visually judge all the images alone. This prevents inconsistent judgements made by several operators.



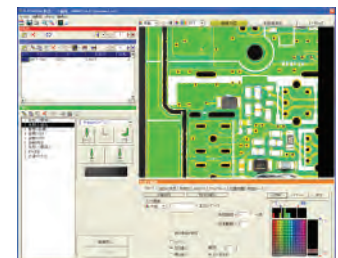
Real-time monitor*

Quality related information obtained directly from the CCC via network gives managers real-time information on the status of quality. This helps them make quick decisions in the event of a problem.



Flexible inspection program

It is possible to customize inspection program easily in order to support a variety of parts and PWBs.



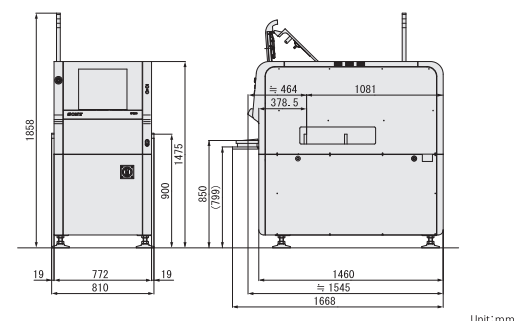
*Option

Specifications

	PWB Visual Inspection Machine
Model name	SI-V200
Machine type	Inline type inspection machine
PWB size	50mm×40mm-510mm×460mm Thickness : 0.4mm-3.0mm
Component size range	0402*, 0603(metric), cylindrical chip, tantalum capacitor, transistor, SOP/QFP, etc.
Inspection speed	0.37sec/frame (Our optimum value)
Resolution	15 μm (Standard resolution), 11 μm (High resolution*)
Inspection items	Omission, offset, polarity, reversed, no-solder, bridge, amount of solder, foreign material, etc.
Power supply	AC200V-240V ±10% 50/60Hz Max 1.5 k VA
Dimensions	W810mm×D1,545mm×H1,475mm (Excluding signal tower)
Weight	1,300kg

* Option ※ Above figures are subject to vary on the conditions. Please contact our sales reps for details.

External Dimensions



Unit:mm

⚠ Safety Precautions: To use the product safely, read and understand the contents of the instruction manual before use. ● Standards, specifications and appearance are subject to change due to continual improvements without prior notice.

Sony EMCS Corporation
SMS Company

<http://www.smt.sonyemcs.co.jp>

The contents of this literature are as of April 2012