

**COST EFFECTIVE  
WAVE SOLDERING SYSTEM  
WS-M400**  
for Medium Production Volumes



**lavortec**

## WAVE SOLDERING SYSTEM FOR MEDIUM PRODUCTION VOLUMES

The M400 is a CE certificated compact Lead Free Wave Solder Machine with inline finger conveyor for bare boards or pallets. Equipped with two convection preheating zones, a double soldering wave, an exchangeable solder pot, the integrated motor driven spray fluxer and optional N2 operation and makes this machine the best choice for lower to medium volumes.



Dual wave solder. Both wave heights are controlled by transducer. Changing the wave height is controlled by adjusting the frequency of power. High quality wave motors made in Italy.

Optional with N2 operation on both waves to enhance solderability and reduction of solder dross.



Titanium solder pot made out of 3mm pure Titanium material with quick connector for easy change of solder pot. Impeller, shaft, nozzles and bolts made out of Ti as well.

Solder pot can lift up and down, move in and out automatically. Ideal changing the solder pot for different applications and the conversion between leaded and lead-free.



Japanese made sprayer for perfect atomization performance of the flux unit. Fully programmable and driven by stepper motor for precise spraying applications.

Optional Automatic flux level controlled with dual sensor system. When flux is lower than limit, it will switch on the pump to feed flux in automatically. Operator just needs to put the whole barrel flux into the flux tank

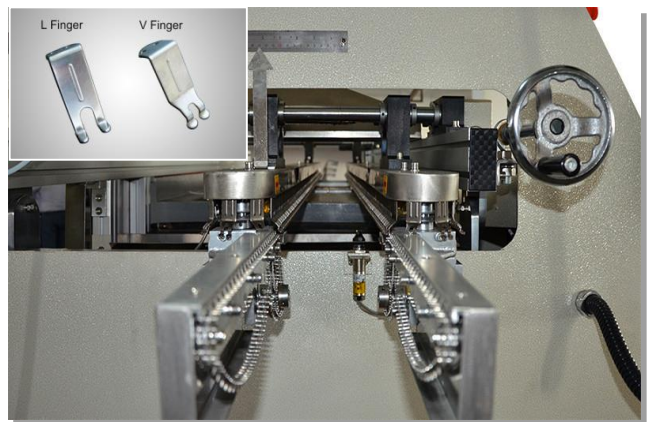


## OVER 300 INSTALLATIONS WOLDWIDE

Two pre heating zones are integrated. The heaters can be drawn out of the rear of the machine and the blowers can be taken out at the top of the zones making maintenance easy and fast



The specially designed heavy duty guiding rails reduce the deformation caused by heat; After two years working you only need to change the cooper bars instead of change the whole conveyor rails.



Standard with V-Fingers, optional with L-fingers or combined L-fingers mixed with V-Fingers all made out of Titanium.

In-loading system: which can connect with the insertion conveyor directly, the sensor at bottom for counting and spray fluxer on/off; with ruler and needle for instruction of width

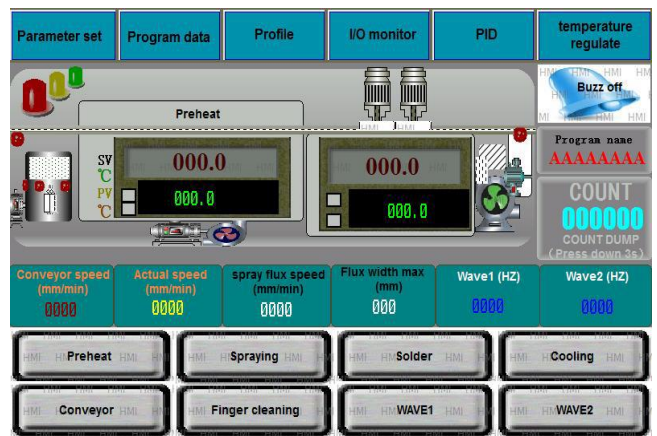


Optional with heavy load Titanium fingers (5mm) to transport PCBs/Pallets of up to 20 kgs per unit

PLC controller, Touch screen and on-line UPS form a stable, safe and efficient controlling system.

The software include all functions like PCB counting, temperature setting and editing, PCB parameter menu, and profile testing, alarms, control of motor temperatures as well as Multilanguage support.

Time saving preheating by one-week timer allowing individual pre-settings for startup times on specific days. When it's time to work, the solder has been melt and everything is ready. Up to 1.5 hours time savings per day.



## Technical overview:

Items	WS-M400
PCB width	30-400MM
Pot Volume	390kg
Running power General power	7.5KW/22KW
Machine Dimension	3140(L)*1250(W)*1600(H)
Net Weight	750KG
Controlling System	Panel Control
Conveyor Motor	1Ph 220V , 60W
Conveyor Speed	200MM-1500MM/Min
Flux Volume	6.5 Liters
Alcohol Volume	4.5 Liters
PCB Direction	Left to Right
Spray drive	Stepper motor drive
Sparyer	St-6 made in Japan
Preheat	2 hot air convection zone
Preheat power	4kw/zone
Solder Pot Material	Titanium
Solder Pot Heater	Cast Iron Heaters
Solder Pot Power	1.2KW*5PCS
Wave Number	Dual Waves
Wave Type	Turbulent first wave
Time for Solder Melt	60 Minutes
Solder Pot Upper/Down	Manual
Solder Pot In/Out	Manual
Finger Cleaning Pump	1PH 220V 10W
Conveyor Type	Titanium finger
Solder Angle	3-6°
Air Supply	3-5BAR
Power supply	3PH 220V 60HZ OR 3PH 380V 50HZ OR 3PH 440V 60HZ

Technical data are subject to change

## PRODUCTION EQUIPMENT FOR THE EUROPEAN MARKET

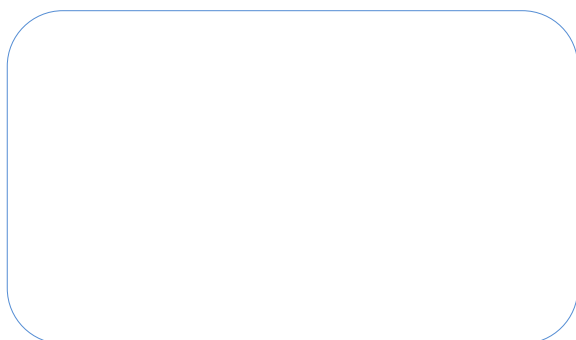


**Lavortec offers a full range of cost effective, high quality production equipment and tools for the European Electronic Manufacturing market.**

The Products are carefully selected by Lavortec and sourced on the world market. All manufacturers are inspected at their factories before they get included in our product portfolio. We are making sure that the manufacturers have proven their knowhow, capacity and quality in their regional markets and that a large reference base is existing. Local specialists of Lavortec ensure additionally that the quality is constantly supervised and every shipment is quality checked before the machines are shipped to Europe. As a customer you buy locally from our European hub. An extensive European network ensures local pre-sales and after sales support

**Do you want to get more information**

**[www.lavortec.com](http://www.lavortec.com)**



Lavortec GmbH • Lindenhofstrasse 11  
8624 Grüt • Switzerland  
Phone: +41 (0)41 752 00 32  
Email: [info@lavortec.com](mailto:info@lavortec.com)  
[www.lavortec.com](http://www.lavortec.com)

**lavortec**  
Cost effective production equipment