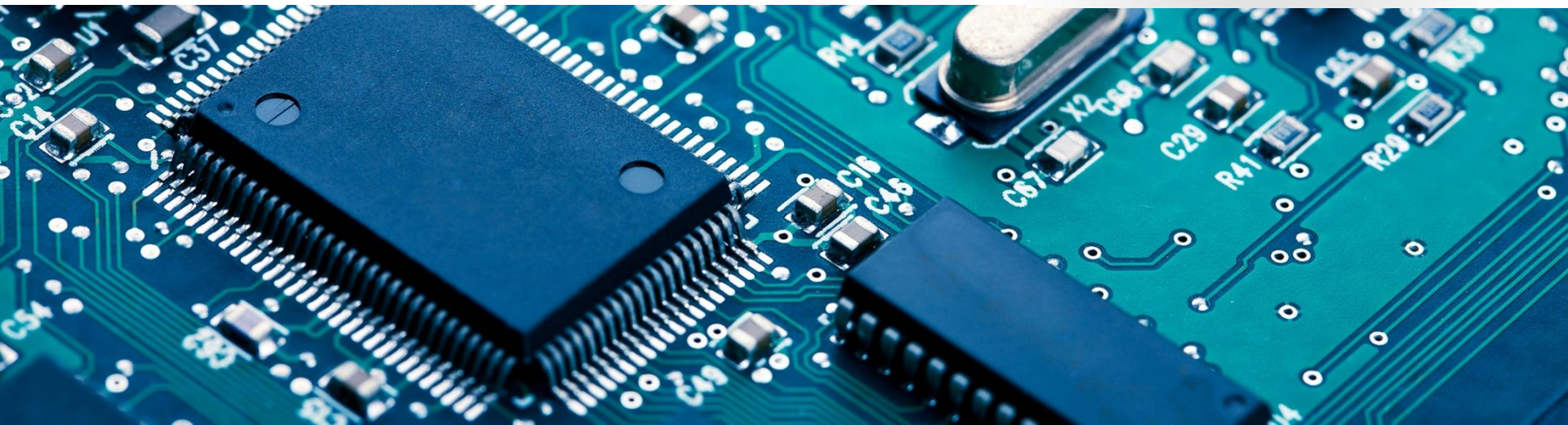




Cost effective production equipment

DIP/THT AUTOMATED INSPECTION SYSTEM DA1200

Automated Inspection System for THT Components
Top Side



DA1200 Main Features

DA-1200 is a new kind of plug-in AOI equipment with high cost performance, easy to program and get started. It can be used for the automatic detection of defects on THT boards either after assembly or soldering.

- Stand Alone or Inline Solution
- Simple installation and implementation
- The equipment can be completely installed in 1 hour without modifying the original production line.
- Ease of use:
 - operate the equipment after trained for just 2 hours
 - Change the product and produce after 10 minutes
- Fast detection: immediate results during board passes through
- Multiple boards can be tested at same time
- Industry-leading intelligent neural network algorithm for high detection rate.



DA1200 Technical Data

DA1200 DIP/THT INSPECTION SYSTEM	
Model	DA1200
PCB Size(Max.)	Depending on inspection conveyor
Inspection Time	1-3 Seconds per Board
Detectable size range	300 x 260mm
Testing Method	Deep neural networks based methods, contrast based methods and color based methods
Camera System	1200 CCD / 12 M Industrial CCD
Light Source	Buil in LED light source
Machine Dimension	1465 x 658 x 510mm
Weight	35 kg
Power Supply	AC220V 50Hz
Power Requirement	200W
Operating Temperature	5-35° C

Improve your Product Quality

Replace your manual inspection of THT boards by the DA1200 and improve your costs and quality

- No more operators needed to check and transfer PCB's
- Reduction of the failure rate
- Avoid costly programming specialists
- Install the system offline as a batch solution
- or directly into your production line
 - after the placement systems or workstations
 - or after the soldering systems
- Improve your quality and avoid costly rework
- Get a fast ROI (Return on Investment)



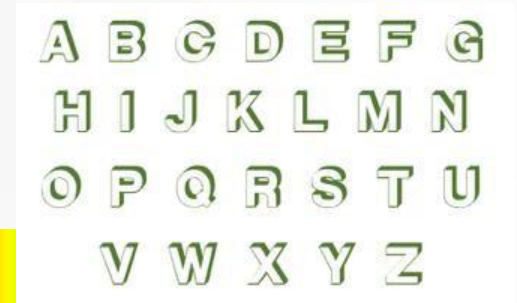
Technology

DA1200 uses deep neural based intelligent algorithms and is a self learning system. Components can be recognized and know better over time which solve misinformation problems caused by offsets

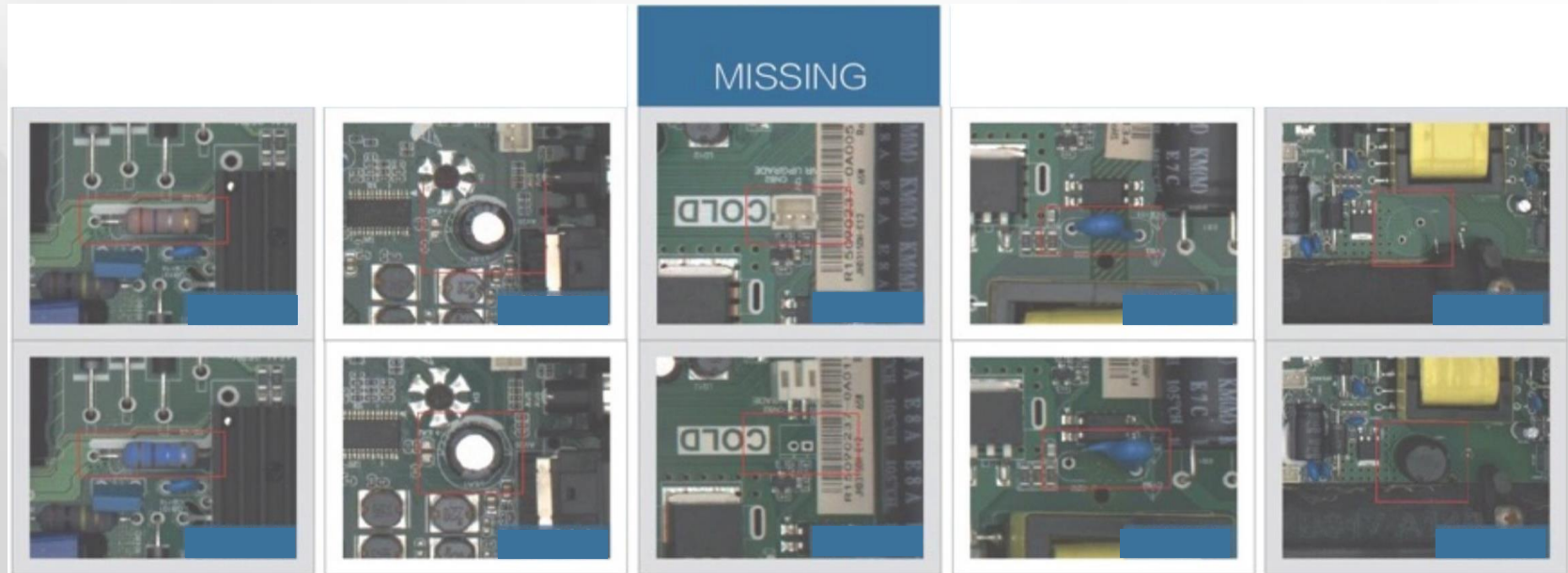
The combination of different specially for this application developed algorithms can match a large variety of different testing situations for more accurate results.

Algorithms used:

- Contrast based
- Colour based
- Character based



Testing Results

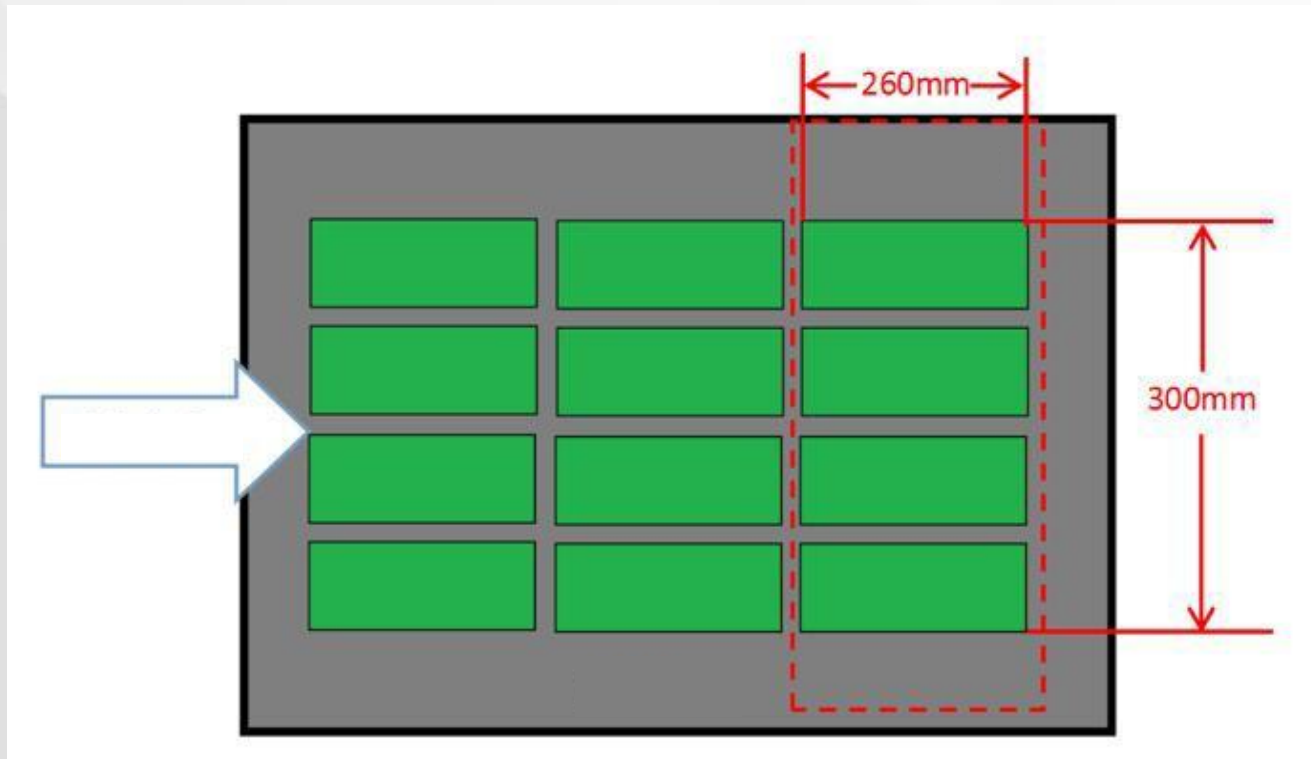


The following errors can be detected within seconds:

- Component presence
- Wrong components
- Wrong orientations
- Wrong positions
- Not correctly inserted components

Inspection Range and Board Size

The DA1200 can inspect PCBs up to a width of 300mm. Working in steps with a dedicated Board Handling System allows to inspect PCB's in steps within seconds.



DA1200 Machine delivery

- DA1200:
 - Base machine
 - Industrial PC, Monitor
 - Rework Software
 - Operation Software
 - 1 year Warranty
- Options:
 - PCB Inline System



About Lavortec

- Lavortec is a **Company based in Switzerland** being in the business of electronic manufacturing equipment for **over 11 years**
- Our team in Shenzhen/China carefully **selects and qualifies proven** suppliers with a **large installed base** in Asia and a **good reputation** from world wide known users.
- **Process evaluation Centre** to test and set up the process for your specific product
- **Product Adaptation** for European requirements can be effected
- All products are **CE tested and certified** by our own team
- All products have to pass a **Quality Check** before they are shipped to Europe
- A **European network** of sales and after sales partner guarantee you **local support**
- In our Hub in Switzerland we arrange **all payments in full safety** as well as taking care of the **import administrations** and the **transport arrangements**



Contact Data



LAVORTEC GMBH

Leimattenstrasse 6

8907 Wettswil

SWITZERLAND

PHONE: +41 (0)41 752 00 32

MAIL: info@lavortec.com

WEB: www.lavortec.com